

---

**School Newsletter Week 10, Term 1, 2023.**

---

**Ellie Newton** <e.newton@gc.ac.nz>

6 April 2023 at 13:02

To: year10@gc.ac.nz, year11@gc.ac.nz, year12@gc.ac.nz, year13@gc.ac.nz, year9@gc.ac.nz

Cc: David Keenleyside &lt;d.keenleyside@gc.ac.nz&gt;

[View this email in your browser](#)

6th April 2023

Kaipatiki Road, Glenfield, Auckland, 0629

+64-9-444-9066

# Message from the Principal

Tō tiko  
Balance

Mahia i runga i te rangimārie me te ngākou māhaki  
With a peaceful mind and respectful heart, we will always get the best results.

As we approach the end of Term 1, it is hard to believe that this term included floods and a cyclone. In some ways, it seems like such a distant memory.

In line with the whakatauki above, it is important to take a breath and focus on the positives and highlight all the great things that have occurred in the last 10 weeks.

Excellent new staff have arrived and added value to our college. The enrolments just keep on arriving and are so grateful for the welcome and inclusion that we have.

International students have come, gone and cried about leaving after enjoying their experience at Glenfield College. Athletics Day was back with a bang and the House Competition continues to grow and build rivalries. EOTC in the form of Business Studies, PE Camps, Tongariro Crossing and OPC (Outdoor Pursuits Centre). These are all experiences that students will always remember.

Mentoring Day and the Junior School Programme with Pat Buckley were all very successful. Finishing off with the CoL Sports Day which was led so well by our Year 13 Students. An absolute sea of activity. Relay for Life was the icing on the cake that typified 'Service' and the sort of school culture that we are developing.

My key takeaway from this term is that Glenfield College feels like it is back. It is growing, thriving and providing a sense of belonging for our community.

Wishing you all the very best for the holidays and the chance to recharge the batteries after a very busy term.

Paul McKinley  
Principal



# Term 2 Starts

## Wednesday, 26 April - Day 3

### New Staff Welcomed



Oliver Hayward joined us as a Groundsman this term. He is excited to be a part of Glenfield College and even more excited to familiarise himself with everyone. He has recently returned from his second year of college in Midland, Texas. He has been overseas in the United States on scholarship to acquire a Business Degree and play basketball. Basketball is a large part of his life and has taken him all over the globe. Off the court, he enjoys going out on the weekends with friends. He is happy to be part of the Glenfield College whānau and is looking forward to meeting even more new faces.

---

### ANZAC Ceremony



This morning the school came together to commemorate ANZAC Day. Students passed by the Field of Remembrance which includes names of local soldiers and nurses who never returned home from battle. The Ceremony opened with a Karakia (Lord's Prayer) in Te Reo Māori by Teina Anderson. Special guests were Taylor Catchpole and Lt James Blake with final remarks by Mr Paul McKinley.

---

## Year 9 Easter Egg Hunt





On Wednesday, all Year 9 students took part in an Easter Egg Hunt organised by our Prefects. Three lucky students were able to find the tickets for the three big Easter Eggs.

---

## Relay for Life



Relay For Life took place on Saturday, 1 April at AUT Millennium. Glenfield College participated with a strong and unified team who ran and walked well over the length of New Zealand, with over 2,000km clocked up. Sam Legg managed a massive 138 laps, while Running Club legends Jacob Freestone and Travis Atkinson both recorded 136 laps of the 400m track.

Glenfield College adopted the theme of bees for this year's campaign. A bee represents a small insignificant insect by itself, but together hives of bees can achieve mighty goals. As a team we raised \$11,681.58. Our top three worker bees in terms of fundraising were Kiersten Fernandez (\$1,086), Emma Seth (\$516) and Tom Chapman (\$446). A big thank you to all participants and sponsors for helping out this worthy cause.

Other highlights of the event included Sophia Aso's energetic and impressive solo performance in the talent quest and Kiersten Fernandez's interview with the Cancer Society.

After a year's hiatus due to the pandemic, it was heartwarming to see the Glenfield College spirit alive and well on (and around) the track. Join us for next year's Relay For Life to truly get on board the Glenfield Train and feel the full force of what it means to be Pride and Respect personified.

By Jacob Freestone and Miss Williams

Please click [here](#) for more photos from the event.



## Level 3 CoL Sports Day



On Friday 31st March we had our annual CoL sports day. Surrounding primary schools sent a netball, touch and football team to compete against each other in a mini tournament. Our Year 13 PE and Sport and Recreation students were all assigned a team to coach and lead for the day. It is always such a great day out for all involved and so good to see the community engagement between all the schools and parents. Our Year 13 students were great role models for the younger students and did a fantastic job teaching them new skills, drills and tips to take on the competition in the tournament.





# Rangitoto Island Visit



On Friday 24th March, 14 short-term International Students were taken on an excursion to Rangitoto Island. They arrived at the Devonport ferry terminal before crossing the harbour to Rangitoto Island. The day was perfect for a climb to the summit. On the way up, they diverted to explore the caves and then continued their journey to the top where they had lunch and enjoyed the view. Before leaving, they were shown an example of holiday homes from the past.

Although it tested most of their fitness levels, everyone enjoyed exploring a different landscape and being out on the water. As Term 1 comes to an end, we farewell all of our Japanese short-term students. We thank them for choosing Glenfield College and have appreciated the laughter and energy they have brought to our classrooms. Please click [here](#) for more photos.



## Level 2 GIS Coaching Day

On Friday 24th of March, the Level 2 PhEd students had a coaching day at Glenfield Intermediate School (GIS). The day consisted of three sports, volleyball, touch rugby/turbo touch, and badminton. The Level 2 students were tasked to teach the GIS students skills related to the sport their group was coaching, the session ended with a game of the chosen sport. The day was a huge success, our students were amazing. Whether it was coaching them one-on-one to improve a specific skill or jumping into the warm-up games to encourage them to participate, our students did all they could to ensure the students enjoyed their time with them. Well done to all our Level 2 Physical Education students who were present at the coaching day, for taking it seriously and promoting our school values. This was evident from the numerous GIS teachers that complimented our students on how well they interacted and coached their students.



## Level 1 PE Camp





On Wednesday 22nd and Thursday 23rd March, the Level 1 PE camp was held. It started with a short trip down to Action Ninja World in Matakana. Looking at it from the ground I thought that it would be easy, but after 5 minutes of awkwardly bending my body and climbing up a ladder upside down to fight gravity, I took a moment to reflect on how wrong I was and how sore my muscles would be the next day. After being bent at awkward angles and flying down water slides for a whole afternoon, we made it to Pakiri Beach Holiday Park which backed onto Pakiri Beach. That night was spent playing games on the beach and in their dedicated games room before a chilly night's sleep. On Thursday, we made our final stop at Goat Island Marine Reserve for a snorkel. We also learnt about the conservation work that has been happening in the area since 1975 to bring the community of sea creatures back to life after being overfished. Overall, this was a great experience that pushed a lot of us way out of our comfort zones, but was definitely worth it. Please click [here](#) for more photos from the trip.

Written by Nate Carroll - Year 11 student.



## Level 2 Geography Camp



On the 12th of March, a group of Level 2 Geography students and two teachers travelled south to Tongariro National Park. This trip was to collect data about environmental changes due to altitude. They stayed at Piper's Lodge and on their second day, they drove up Mount Ruapehu to collect data in the pouring rain. The highlight of the trip was the final day, where they completed the Tongariro Alpine Crossing, waking up at 5am, and by 6am they were on a shuttle headed for the Crossing. The Tongariro Alpine Crossing is 19.4km long and reaches altitudes of nearly 2000m high. They started walking in the pitch black and could barely see the rest of the group, but by 7am, made their way to the incredibly steep Devil's Staircase. As the sun rose, they could see more and more of the amazing surroundings like the massive volcano of Ngauruhoe and the ice littering the plains they walked across. They reached the 1886m tall peak of Tongariro by 10 am and the beautiful Emerald Lakes by 10:30am. They began their descent and walked for almost another 4 hours as the sun kept rising. They finally completed the Crossing by 1:40pm. The 7-hour walk was very tiring but absolutely worth the gorgeous views of the area.



# Duke of Edinburgh Awards



Congratulations to Jacob Freestone and Nate Carroll who have both completed their Duke of Edinburgh Bronze Award. Both students faced challenges involving skill-based learning, showing service to the local community, participating in physical activities, and accomplishing an overnight adventurous journey for the Bronze Award. They have now progressed onto the more challenging Silver Award.

Congratulations to Rebekah Freestone who has completed her Duke of Edinburgh Silver Award after participating in two three-hour tramps with a two-night camp at Hunua Falls. She now looks forward to completing the prestigious Gold Award this year.

Good luck to them all and a reminder to other registered Duke of Edinburgh students to finish your online portfolios so that we can claim your certificates and badges. If any students would like to join the Duke of Edinburgh Award for 2023, they should see Mr Hill.

Mr Hill will be appearing at the next school assembly to talk about this exciting award that will allow you to dream big and uncover who you really are. And if that wasn't enough, there is a fantastic opportunity from the NZ Sailing Trust. This is open to any student and would be most suitable for students looking to complete their Silver or Gold Adventurous Journey element of the Duke of Edinburgh Award in 2023. Please contact Mr Hill for further details at [m.hill@gc.ac.nz](mailto:m.hill@gc.ac.nz)





**SAIL ON A LEGENDARY  
ROUND THE WORLD MAXI YACHT**

**Steinlager 2** LION NEW ZEALAND

**Tikapa Moana - Adventurous Journey**

Tikapa Moana youth explorer is a 5 days of sailing and kayaking. Two nights sailing on the internationally renowned maxi yachts, Lion NZ or Steinlager2. Everybody on board has the opportunity to learn to sail the boats, help with the preparation of meals and sleep aboard. Two nights are spent on the water with Auckland Sea Kayaks, where students learn how to kayak and camp in a safe, fun and supportive environment.

**DUKE OF EDINBURGH (OPTIONAL)**

The programme is structured in a way that allows the participants to participate and complete components of the Duke of Edinburgh Hillary Award (DOE). The programme components meet the requirements for the Adventurous Journey and as such, any participants who are interested in using this programme for DOE can do so.

For further information check out [www.nzsailingtrust.com/sail-kayak](http://www.nzsailingtrust.com/sail-kayak)



**SAIL ON A LEGENDARY  
ROUND THE WORLD MAXI YACHT**

**Steinlager 2** LION NEW ZEALAND

**HINEMOANA**

Our female-specific youth development programme is delivered over 5 days of sailing and kayaking.

Two nights sailing on the internationally renowned maxi yachts, Lion NZ or Steinlager2. Everybody on board has the opportunity to learn to sail the boats, help with the preparation of meals and sleep aboard.

Two nights are spent on the water with Auckland Sea Kayaks, where students learn how to kayak and camp in a safe, fun and supportive environment.

**DUKE OF EDINBURGH (OPTIONAL)**

The programme is structured in a way that allows the participants to participate and complete components of the Duke of Edinburgh Hillary Award (DOE). The programme components meet the requirements for the Adventurous Journey and as such, any participants who are interested in using this programme for DOE can do so.

For further information check out [www.nzsailingtrust.com/hine-moana](http://www.nzsailingtrust.com/hine-moana)



## Students Driving Vehicles to School

We want to continue to ensure our students are kept safe when they are making their way to Glenfield College. It is a requirement that we are aware of any students who are driving to and from our school each day.

If your child drives a vehicle to school, can you please either fill out the digital form below by clicking on the link, or ask your child to collect a permission form from Mrs Newton in reception and return it to

school with your child. It should only take you a few minutes. Please fill out this form even if you have completed this in previous years, as we need to have the most up-to-date records at the school.

Your child will be issued a Glenfield College parking pass so that if they park on our top driveway we are aware of their car and can find them if need be.

Please note that the top driveway is a shared space with Glenfield Rugby Club, and the Wilson and Wairau students also use this driveway. The privilege of driving to school comes with an expectation that your child will drive responsibly and will not carry illegal passengers.

Digital permission to bring a vehicle to [school linked here](#).



## Year 9 Whānau Survey

If you have a Year 9 student, please complete the survey that has been sent to your email from the school. If you have any questions about the survey, please phone the office on 09 444 9066.

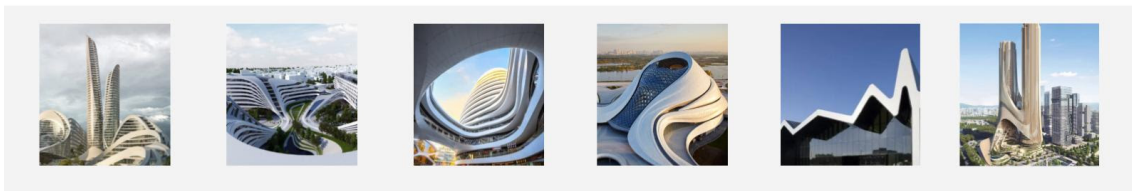
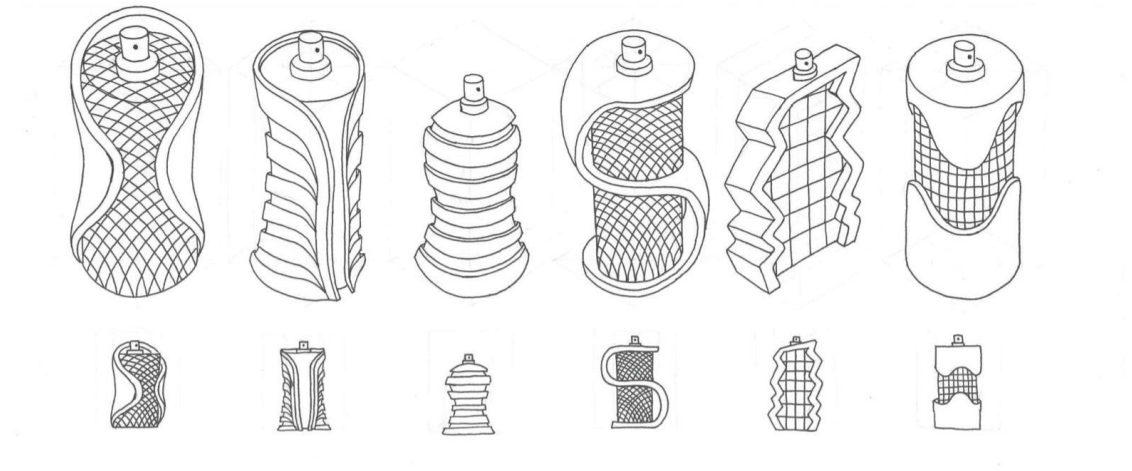


Please click [here](#) to view Glenfield College Hauora.



# Technology Block Superstar

## IDEATION



Joryll Luna - Year 11 student.

## Important Dates to Note

24 April - Teacher Only Day  
25 April - ANZAC Day  
26 April - Term 2 Starts - Day 3  
3 May - Cross Country - 2pm  
6 & 7 May - Hillary Challenge  
8 - 12 May - Academy Basic Leaders Course  
10 & 11 May - North Shore Careers & Pathways Expo  
12 May - Mother's Day Breakfast - 7.30am - Kaipatiki Theatre  
16 May - North Harbour Zone Cross Country  
1 June - National Dance Challenge



## Computers at School

This term we have been very fortunate to receive donations of laptops and monitors from a couple of companies. The laptops will be used in the Technology Department and the monitors have been used to replace outdated ones in a couple of our computer rooms. All will be used for the benefit of our students to assist in their learning. Special thanks go to The Laptop Drop ([www.thelaptopdrop.nz](http://www.thelaptopdrop.nz)) for coordinating the donation of the equipment and also to the two I.T. companies that gave us their devices and monitors; EzyVet ([www.ezyvet.com](http://www.ezyvet.com)), a cloud-based vet practice management software company and Plexure, an IT company that specialises in software development for customer engagement solutions for consumer brands.



---

## Devices Compulsory for Year 9 and 10

Just as a reminder to all Year 9 and 10 students, you are expected to have a Chromebook or equivalent for all lessons every day. If you have difficulties with this, then please contact your dean to discuss how we can assist. If your device is broken or is out of battery then there are a limited amount of devices available at the library but these should only be borrowed for the day.



---

## Safety when leaving School

A reminder for parents that the gates are closed for pickup of students at the end of the day. This is for the safety of those students leaving at 3.10pm. Please arrange to collect your child further up Kaipatiki Road, either near the rugby club or towards our netball courts.

If you are leaving the school through the main gates then you should turn left as this is the safest, and quickest way to exit. If you need to head up Kaipatiki Road, then go around the roundabout and head towards Glenfield Mall.



---

## School Communication

Please ensure we have up-to-date contact details. You can do this by updating them on the [Parent Portal](#), or by sending us an email [admin@gc.ac.nz](mailto:admin@gc.ac.nz).

Please keep up to date with College events via our online calendar below. This will be updated as information comes to hand.

If you have any questions about our College communication, please feel free to contact me at [admin@gc.ac.nz](mailto:admin@gc.ac.nz).

## UPCOMING EVENTS

Click [here](#) to view  
the school calendar

---

To follow [@glenfieldcollegesport](#) click below





To see the latest sports fixtures click below



## School Cafeteria

Please be aware that the school cafeteria is closed so please make sure your child brings their lunch to school. The Wharekai and Service Academy are open at lunchtime if required. The school will be using EZLunch next term. Keep an eye on our website and social media platforms for more information.



# Order Lunches

## new to ezlunch?

Quickly create an account to order lunch now.

1. Scan QR code to create a new account.



2. Enter your details to get started.

3. View the menus & click to add items to the cart.

4. Go to Checkout & pay.

5. Collect your lunch at 1.30pm from Quad Kitchen.



**THANK YOU** for your ezlunch order.

Curious to see what's on the menu?

Go to <https://ezlunch.co.nz/schools> and search Glenfield College to view a sample menu or click here

If you would like any help, please get in touch.

8am – 4pm weekdays

09 475 5287

0800 EZLUNCH

[hello@mykindo.co.nz](mailto:hello@mykindo.co.nz)

# do you need help with...



understanding  
on your own

---



homework  
with others

---



assessments  
with teachers

## Learning Hub

School Library | Tues & Thur | 3.15pm - 4.30pm





### Glenfield College Uniform Available from 'New Zealand Uniforms'

**Store:** 19A Douglas Alexander Pde, Albany

**Phone:** 09 477 6300

**Email:** albany@nzuniforms.com

**Store Hours:** Weekdays 9am – 5pm, Saturday 9am – 1pm

**Web:** www.nzuniforms.com

**Payment Options:**

NZ Uniforms accepts Cash, Eftpos, all major Credit Cards and WINZ payments. We also offer finance through Gilrose Finance, PartPay and have a 'Uniform Club' which is a great way to save for your School Uniform purchases.

**'Uniform Club' :**

It's easy, set up an account and make automatic payments (weekly, fortnightly or monthly) in advance and watch your balance grow. When you are ready to make your Schoolwear purchases with NZU, your money is already available and waiting to be spent! Call or visit the store today to get started.



Copyright © 2023 Glenfield College, All rights reserved.  
You are receiving this email because you opted in to join our mailing list.

**Our mailing address is:**

Glenfield College

Kaipatiki Road