
School Newsletter Week 10, Term 2, 2022.

Glenfield College <admin@gc.ac.nz>
Reply-To: Glenfield College <admin@gc.ac.nz>
To: d.keenleyside@gc.ac.nz

8 July 2022 at 11:52

[View this email in your browser](#)



8th July 2022

Kaipatiki Road, Glenfield, Auckland, 0629

+64-9-444-9066

Farewell from Nigel Snookes



Tēnā koutou, tēnā koutou, tēnā koutou katoa

As Term 2 draws to a close, so does my journey at Glenfield College. 11 and a half years, around 7000 lessons, and 950 odd students taught. As I enter into my own new chapter, it is hard to leave this one behind. I will miss the energy, enthusiasm and passion the students here at Glenfield College have brought to the classroom. I will miss the characters who have made each day amusing, challenging and worthwhile. I will miss the wonderful staff who work tirelessly to ensure our learners are aspirational and adventurous and that they are provided with the highest levels of teaching and learning. I will miss our community that values and invest in the school and supports the school in all it does. Glenfield College truly is a wonderful school, and I am glad to have been able to be a part of it for so long. I am sincerely grateful for the opportunities that Glenfield College has given me...to learn, lead and grow to be ready for this next step.

A new and exciting challenge awaits me and while it saddens me to not be able to see out this academic year, it's time to say goodbye. I know I am leaving behind an awesome team who will continue to grow and develop our learners.

In term 3 I will start in my new role as Deputy Principal at Birkenhead College - working with a new team of teachers and staff, as we support and guide the students of Birkenhead College on their educational journey. I love that I will continue to work in the local community and see many familiar faces, including students, staff and whanau who I have connected with over the years. I look forward to hearing and reading of the ongoing successes of the learners at Glenfield College.

To finish, I have a final message for the students of Glenfield College. The experts were beginners at first. Don't let setbacks prevent you from achieving your goals and reaching your potential. Be aspirational, be adventurous, be resilient, and do so with pride, respect and integrity.

Ka kite anō au i a koutou

Nigel Snookes.



Please click [here](#) to view Glenfield College Hauora.



OPEN EVENING

WEDNESDAY, AUGUST 3 2022 | 6PM - 8PM
KAIPATIKI THEATRE | KAIPATIKI ROAD | GLENFIELD



belong strive succeed

Matariki Week Celebrated



From 20-24 June we celebrated Matariki. Matariki is a special occasion in the New Zealand calendar which marks the start of the Māori New Year. Signified by the Matariki cluster of stars reappearing in our night sky, this is a time to reflect on the past year, celebrate the present, and plan for the year ahead. Please click this link to see the video: <https://www.gc.ac.nz/matariki-video-2022/>

Guest Speaker: Pat Buckley



On 16 June, we welcomed Pat Buckley as guest speaker to talk with our Year 12 & Year 13 students. He

is the Founder and Managing Director of Amped4Life Trust which is a non-profit organisation that was formed to help bring insight and understanding to teenagers about the dangers of substance abuse and the importance of making good choices. He spoke about his own struggles and heartbreak. Please click here to see photos from the presentation: <https://www.flickr.com/photos/129130977@N02/albums/72177720299828496>

Year 9 & 10 Parent/Teacher Information Evening

On 8 June, we held a Parent/Teacher Interviews evening in the Theatre. This was an opportunity for the parents/caregivers of both Year 9 & 10 students to meet with their subject teachers to discuss any questions or concerns they may have. It also gave them the opportunity to see how their child is progressing with their subjects. Mr Bonneywell said he was pleased with the turnout.

Attitude Talks



In mid-June, our Years 9 – 11 each listened to a presentation from Attitude, a subsidiary of The Parenting Place. These covered topics such as Hauora, drugs and alcohol, resilience, and positive choices.

Theatre Dance Performance



At lunchtime on 8 June, a large crowd attended a dance performance in the Theatre from one of our Satellite schools. A big thank you goes to our students, Lorelei Jull & Vienna Lind, for leading the performance. Please click [here](#) to see more pictures from the performance.

Level 1 Business Studies Market Day



At lunchtime on Friday 10 June, our Level 1 Business Studies students showed off their skills at the annual Market Day. It was an eventful lunchtime as many students came and supported the Business Studies classes. A large variety of products were available including churros, pancakes & Kawakawa cream. Participation in Market Day enables students to achieve credits towards their Business Activity assessments. Mr MacLeod was very proud of the students for a very successful event. Please click [here](#) to see more photos from the event.

Level 2 Wero Vector Whitewater Rafting PE Trip



On 14 June, our year 12 Physical Education students went to Wero Vector Whitewater Rafting Park for their risk management assessment. All students had an exciting experience in freezing cold water and were definitely pushed outside their comfort zones. They learnt how to paddle in fast-moving water, wear the correct equipment and look after their physical and emotional safety. It was a brilliant opportunity for our Physical Education students! Please click [here](#) to see more pics from the trip.

Feedback on Peer Support Leaders



Here is a summary from a few of our Form Class teachers:

I have been surprised several times with how well students get along with the Peer Support students and also their classmates during this time. Also, the little programmes/activities cover cooperation and teamwork skills and furthermore have deeper meanings with a purpose to the activities which are fantastic! The Peer Support programme really fulfilled the aim of getting the Year 9s to bond with each other and also with several senior students which allows them to be more approachable when needed. My Year 9s really looked forward to Fridays when the Peer Support Leaders came in and every time a positive synergy was created which just really warmed my heart. - Ms Jaclyn Jung (9Jg)

The Peer Support Leaders:

- were amazing
- were awesome
- helped us settle into the school
- helped us get to know each other
- are nice
- taught us life lessons

Mr Karl Lee (9Le)

It has been really great having our year 12 leaders meeting with the year 9s weekly. They have helped the group to gel and I have watched boundaries disappear. Some of the students knew each other, while others seemed isolated. Getting students out into the sun and running activities made it easy for them to learn to trust each other and for new friendships to develop. The year 9s also found it easy to approach senior students if they needed information. Great work Year 12 Peer Support Leaders. Your work with the Year 9 students is valued and greatly appreciated. - Mr Gerald Shand (9Sh)

The Peer Support programme is an effective tool, which created a socio-emotional climate of "care" and helped 9KM students to adapt to the College softly. - Ms Anya Kamynina (9Km)

I'm so glad to have had the opportunity and to have taken part in the Peer Support programme. From learning new interesting leadership styles with Ms Fan, to implementing them with the Year 9s over Term 1 and 2, it was a blast! Great to be able to interact with the Year 9s and help connect them to one another through inactive tasks, focusing on things such as team building, leadership, and combating

bullying. It was a privilege to take on this challenge to help the Year 9s and develop my leadership style while doing so. - Luke Oborn (Year 12 Peer Support Leader)

Please click [here](#) for more photos.



Creative Excellence Award



Congratulations to Lyden Chloe Cambe - Year 13, for achieving this Creative Excellence Award in 3D Animation.

Gateway for Jessica Battye at GR Engineering

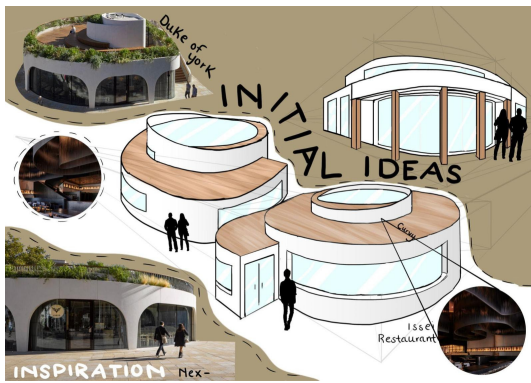


Jessica Battye in Year 12 has been attending a Gateway programme at GR Engineering. Here is some feedback from two of her employers:

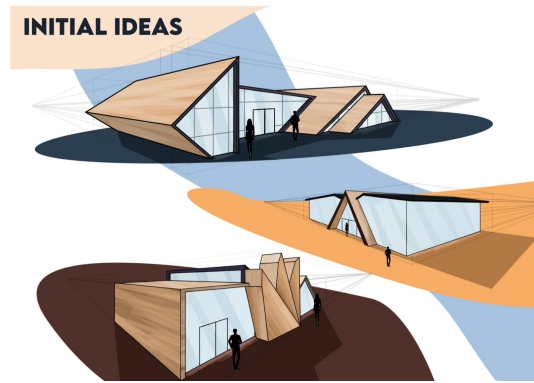
"Jess is going well and is much more focused and interested than anyone else we've had through the programme. She has been mostly observing and the boys have involved her a little bit more with hands-on tasks where possible. We haven't been just getting her to do menial tasks but if she wants any holiday work she will be doing that." Greg Riach - GR Engineering.

"Jess reminds us all of where we were before we embarked down this road of automotive engineering. She brings a lot of positive energy to the workshop and is a pleasure to have around. In a trade that is rapidly developing into something none of us can predict, it's a pleasure to have young visionaries come through with fresh thoughts and ideas. We here at GR Engineering wish her the best in all her future endeavors". Victoria Mayhill - GR Engineering.

Technology Block Superstars



Neal Francis Castro - Year 12 student



Tristan Santos - Year 12 student

Important Dates to Note

- 25 July - Term 3 Starts - Day 6
- 26 July - Level 2 Geography Trip
- 27 July - Wairau Intermediate Visit
- 28 July - Glenfield Intermediate Visit
- 29 & 30 July - MUNA
- 31 July & 1 August - Level 3 PE Trip
- 2 August Whanau Hui - 6.30pm in the Wharekai
- 3 August - Open Evening - 6-8pm - Kaipatiki Theatre

Term 2 Sports Wrap







Glenfield College has had a very successful term of sport. Here are a few highlights from this term.

To follow @glenfieldcollegesport click below



To see the latest sports fixtures click below



Covid-19 Information

The well-being of our students and staff is very important to us. We are aware that along with Covid, the winter bugs are also doing the rounds. If your child has returned to school post-illness but still has a leftover symptom, could we ask that they wear a mask to protect the health of those around them. Please note that although masks are no longer mandated in schools we are still highly recommending, encouraging and supporting students to do so. Please follow these links to access the online forms for reporting of covid-related absences:

Positive Covid case: [here](#)

Household Contact: [here](#)

If your child becomes unwell at school...

Thank you for keeping your child at home if they have any COVID symptoms. Common COVID Omicron symptoms for teenagers are a sore stomach, sometimes with nausea, diarrhea and vomiting, instead of or as well as coughs & sore throat etc. If they have any of these symptoms, please keep your child home even if they test negative as RAT results are not always reliable. Several students have now tested positive twice for Omicron recently. The gastro symptoms are also symptoms for Norovirus and Influenza A, both of which we currently have at school.

If your child or a family member tests positive, please use the link on our school website to let us know, so we know we have the correct information.

Until last week, you did not have to isolate again, if a family member tested positive within 90 days of your testing positive. From last week, this has been reduced to 29 days, because the new Omicron variants are highly transmissible.

If your child phones you during school hours to let you know they are sick and want to go home, please remind them to follow school rules and go to the sickbay, where we will look after them and contact you as necessary. It helps us to know where they are, and that they are safe.



Return of International Students – Homestay Families Required

With the upcoming change to New Zealand border restrictions, we are excited to welcome International Students back to Glenfield College from Term 3, 2022.

We are looking to expand our pool of homestay families for both long-term and short-term placements.

Homestay families play a vital role in our International Student programme, helping our students to feel at home during their stay and to make the most of their time in New Zealand. Hosting an international student can be a very rewarding experience and is a great way to learn about another culture.

We are excited to be welcoming a male student from Italy and two male students from Japan who will be attending Glenfield College for one term only. If you are interested in hosting one of these students, please complete this form: <https://lpsh.secure.force.com/HostFamilyApplicationForm> and a staff member will be in contact with you.



School Communications

Please ensure we have up-to-date contact details. You can do this by updating them on the [Parent Portal](#), or by sending us an email admin@gc.ac.nz.

Please keep up to date with College events via our online calendar below. This will be updated as

information comes to hand.

If you have any questions about our College communication, please feel free to contact me at admin@gc.ac.nz.

UPCOMING EVENTS

Click [here](#) to view
the school calendar

Click [here](#) to view
the school calendar

FRIDAY 12 AUGUST

QUIZ Night

7 PM

Kaipatiki Theatre,
Glenfield College

Doors open 7pm
Quiz starts 7.30

Eftpos
available on
the night

\$10

BYO Nibbles and Non-Alcoholic Drinks

Support Our Mixed Hockey Team going to Tournament

There will be a...

Quiz • Dessert Stall • Silent Auctions

GET YOUR FRIENDS TOGETHER FOR A TABLE

● Contact bustedk9@xtra.co.nz to buy tickets ●

do you need help with...



understanding
on your own



homework
with others



assessments
with teachers

Learning Hub

School Library | Tues & Thur | 3.15pm - 4.30pm



WEARING IS BELIEVING NZ UNIFORMS

Glenfield College Uniform Available from 'New Zealand Uniforms'

Store: 19A Douglas Alexander Pde, Albany

Phone: 09 477 6300

Email: albany@nzuniforms.com

Store Hours: Weekdays 9am – 5pm, Saturday 9am – 1pm

Web: www.nzuniforms.com

Payment Options:

NZ Uniforms accepts Cash, Eftpos, all major Credit Cards and WINZ payments. We also offer finance through Gilrose Finance, PartPay and have a 'Uniform Club' which is a great way to save for your School Uniform purchases.

'Uniform Club' :

It's easy, set up an account and make automatic payments (weekly, fortnightly or monthly) in advance and watch your balance grow. When you are ready to make your Schoolwear purchases with NZU, your money is already available and waiting to be spent! Call or visit the store today to get started.



AN UPDATE FROM OUR TUCKSHOP PROVIDER

We have felt significant pressures on the food service at our Champion Tuckshop due to the current food inflationary climate. The quarterly CPI inflation rate was 1.8% in March 2022 quarter, and 6.9% annual inflation rate compared with March 2021. In the March 2022 quarter compared with the previous quarter, December 2021 the CPI rose 1.8%. Price increases were widespread across all main groups in the CPI basket increasing in the year.

Food has been the most significant contributor to quarterly inflation, with food prices increasing 7.6% in the year ended March 2022 (for sources and further information email us at hello@libelle.co.nz). As a result, we have reviewed our Champion Tuckshop menu prices to be implemented in Term 3 2022. Please find our updated menu below, and email any questions, comments or feedback to hello@libelle.co.nz.



EATSMART

DAILY DEALS

SEE SELECTION AVAILABLE

- Fresh Wraps from \$4.50
- Sandwiches from \$3.00
- Filled Rolls from \$5.00
- Pasta Dishes from \$4.50
- Rice Dishes from \$5.50
- Combos \$7.00

BLACKBOARD SPECIALS

Ask our friendly staff at the tuckshop what the Blackboard Special of the day is!

THE CLASSICS

- Hash Brown \$1.50
- Chicken Tender \$3.00
- Garlic Bread from \$2.50
- Wedges \$3.50
- Cheese Burger \$5.00
- Chicken Burger \$6.00

LOOSE CHANGE

- Baked Items from \$3.80
- Cookies \$3.00
- Ice Creams from \$2.50
- Juicies & Moosies \$2.50
- Drinks from \$2.30

FOLLOW US ON FACEBOOK

FB.COM/CHAMPION TUCKSHOPS

EATSMART

DAILY DEALS

SEE SELECTION AVAILABLE

- Fresh Wraps from \$4.50
- Sandwiches from \$3.00
- Filled Rolls from \$5.00
- Pasta Dishes from \$4.50
- Rice Dishes from \$5.50
- Combos \$7.00

BLACKBOARD SPECIALS

Ask our friendly staff at the tuckshop what the Blackboard Special of the day is!

THE CLASSICS

- Hash Brown \$1.50
- Chicken Tender \$3.00
- Garlic Bread from \$2.50
- Wedges \$3.50
- Cheese Burger \$5.00
- Chicken Burger \$6.00

LOOSE CHANGE

- Baked Items from \$3.80
- Cookies \$3.00
- Ice Creams from \$2.50
- Juicies & Moosies \$2.50
- Drinks from \$2.30

FOLLOW US ON FACEBOOK

FB.COM/CHAMPION TUCKSHOPS



Torpedo7

UP TO 50% OFF *for friends and family*

VALID FROM 2nd TO 17th JULY



HOW TO REDEEM

INSTORE - show this flyer printed or on your device to one of our great in-store staff.

ONLINE - use code at checkout, remember you can select click and collect to skip the queues and pick up local.

CODE: UPPNORTH

Discounts are off RRP. If the product is already on promotion customer will receive the lower offer or promotional pricing. Not all products are eligible for a discount. Not available in conjunction with any other offer. Excludes Burton, Electronics, Freight, Gift Cards and Workshop Services. VALID FROM 02/07/2022 TO 17/07/2022.





Hangi
Pork, mutton, chicken, potato, kumara, pumpkin, cabbage and stuffing.

\$20

Fry bread Pudding



Everybody loves a good hangi

Collect from the Glenfield Greyhounds clubrooms
9th July 12 - 2pm



"Don't miss out, order yours today."

RASCALS fundraiser to get to GLOBAL GAMES 2022

This August our Greyhounds Under 11 Rascals will be travelling to participate in the Global Games Junior Rugby League Festival in Christchurch.

After having the last two seasons disrupted by Covid, this will be an amazing opportunity for our team to make lifelong memories with their teammates and play the game they love against teams from all over New Zealand, and even some coming from Australia.



GLENFIELD GREYHOUNDS

ARL Holiday Blast

SCHOOL HOLIDAY PROGRAMME FOR AGES 5-12

\$25 per day

WHEN: 13TH-15TH & 20TH-22ND JULY 9AM-3PM (DROP OFF FROM 8AM, PICKUP TIL 4PM)

WHERE: GLENFIELD RUGBY LEAGUE CLUB SUNNYNOOK PARK

Register at aucklandleague.co.nz/Holidayblast




Copyright © 2022 Glenfield College, All rights reserved.

You are receiving this email because you opted in to join our mailing list.

Our mailing address is:

Glenfield College
Kaipatiki Road
Glenfield
Auckland, Auk 0629
New Zealand

[Add us to your address book](#)

Want to change how you receive these emails?

You can [update your preferences](#) or [unsubscribe from this list](#).

