

School Newsletter Week 7, Term 3.

Glenfield College <reception@gc.ac.nz>
 Reply-To: Glenfield College <reception@gc.ac.nz>
 To: d.keenleyside@gc.ac.nz

4 September 2020 at 12:04

[View this email in your browser](#)



4th September 2020

Kaipatiki Road, Glenfield, Auckland, 0629

+64-9-444-9066

Message from the Principal

When written in Chinese, the word "crisis" is composed of two characters: one represents danger and the other represents opportunity. - John F Kennedy

Recently I came across this quote and felt it was most appropriate based on the year our country is experiencing. If anyone had suggested, one month ago, that Auckland would go into another Alert Level 3 lockdown, I would not have taken them seriously! Yet we did, and a week after returning, our sole focus is helping to provide stability, routine, systems and a sense of purpose for all of our students.

Over the last two days, I have visited all of our senior classes and have spoken to the students about the

upcoming examinations. Never have senior exams been so important. All students now recognise that the exams in Week 9 and Week 10 will be instrumental if a derived grade is required (ie if we go into another lockdown and NZQA end of year exams are impacted upon).

I would like to congratulate and acknowledge both the staff and students for the way they have equally adapted to returning to school. We had 89% attendance on Monday and it has steadily increased over the week. Having lost 50 teaching days due to the combined lockdowns (which is equal to one full term), our sole focus is working with the students to ensure they experience academic success and achieve to their potential.

This has been an exceptionally challenging year, yet as stated above, out of a crisis, while there is danger, the positive is the opportunity that we intend to grasp.



Geography Trip to Rotorua



On Sunday 9th August, students studying Geography at Level 1 and 3 had an amazing time exploring the tourism and geothermal activity around Rotorua, focusing on the sustainability of its tourism industry. They visited Te Puia Cultural Centre and Geothermal Park, as well as having fun on the gondola and luge. They visited the Lady Knox Geyser, Wai-O-Tapu and the Zorb (with a guided tour of the zorb factory afterwards).

"It was a really fun experience and a major highlight of 2020. It has allowed me to see first-hand geographical scenery and nature" - Sienna Ostermeyer (L1Geog)

To see more photos of the trip, please click on this link:

<https://www.flickr.com/photos/129130977@N02/albums/72157715439440223>

Gateway STAR Course





During the July school holidays Ethan, Jessica and Melissa enjoyed their experience at the Crown Institute of Studies where they undertook a three-day barista training course. They learnt how to work the coffee machine to make barista-quality coffees - including frothing the milk and creating six different types of coffee!. At the end of the course they took a short theory test to gain the qualification.

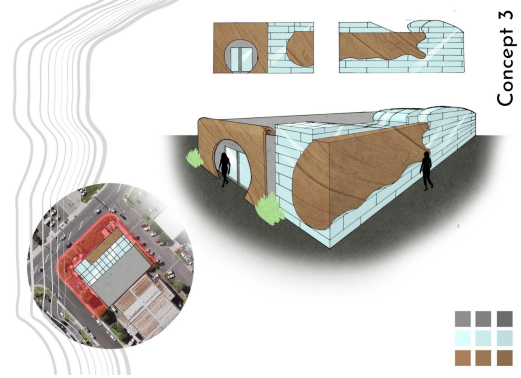
Matthew Jones from the Crown Institute of Studies said: "Thank you for sending along your delightful students! Each of them were all quite remarkable – Ethan Peters is a natural and makes fantastic coffee, Melissa Cotterill really bonded with students from other schools and Jessica-Leigh Pirie was an amazing team player. "

Design & Visual Communication


Work of the Week



Alexander Edwards - Year 12 Student



Nathan Freeman - Year 12 Student



YEAR 9 2021 ENROLMENT

ENROLMENT EVENINGS:

Wed 2nd Sept, Thurs 3rd Sept,
Mon 7th, Tue 8th Sept
4pm to 7pm

Students must be accompanied by a parent/caregiver. Please bring a birth certificate/passport and the latest school report. No appointment necessary.

Exam Schedule

	Thursday 17 September Day 6	Friday 18 September Day 1	Monday 21 September Day 2	Tuesday 22 September Day 3	Wednesday 23 September Day 4	Thursday 24 September Day 5
Morning Period 1 8.45-10.15	L3 HeEd Th	L3 BusS Th		L3 Danc Dr L3 Phys Th	L3 Geo Th L3 Maor Th	L3 Dram Th L3 Musc Th
	L2 BusS Th L2 Hist Th L2 Phys Th	L2 Math Th	L2 Biol Th			L2 Music Th
	L1 Geo Th	L1 Hist Th		L1 Danc Dr	L1 Maor Th	L1 Dram Th L1 Music Th L1 Macc Th
Afternoon Period 5 1.45 – 5.00	L3 Engl 43 44		L3 Stat Th	L3 Biol Th	L3 Calc Th	L3 Chem Th L3 Hist 43
			L2 Engl C Th L2 Engl V Th	L2 Chem Th L2 Geo Th		L2 Macc Th
	L1 Math Th	L1 Sci Th	L1 BusS Th		L1 Engl Th	

Wednesday 18th – Friday 20th November

YEAR 9 & 10 SCHOOL CAMP

Camp Adair

If you require a permission slip or
further info please email:

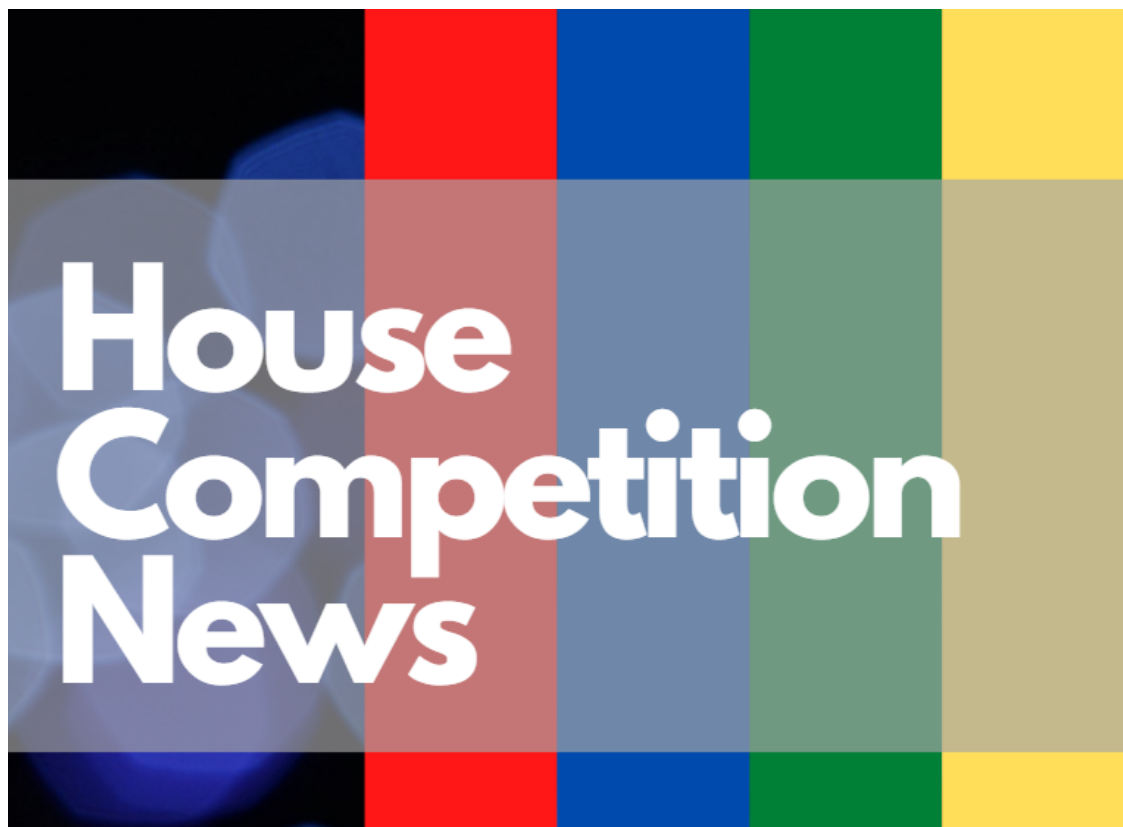
r.anderson@gc.ac.nz or
r.colquhoun@gc.ac.nz



Year 9 & 10 students will have the opportunity to attend Camp Adair for a three-day residential camp in November 2020. While at the camp, students will have the chance to participate in a range of activities such as the climbing wall, mud slide, confidence course, trapeze, bushcraft, initiative activities and more.

UPCOMING EVENTS

Click [here](#) to view
the school calendar



Distance Challenge

Over the last few weeks, Glenfield College has been busy clocking up steps and exercise distances traveled as part of our South Island Distance Challenge. The current standings and distances are:

Tauhinu: 835km

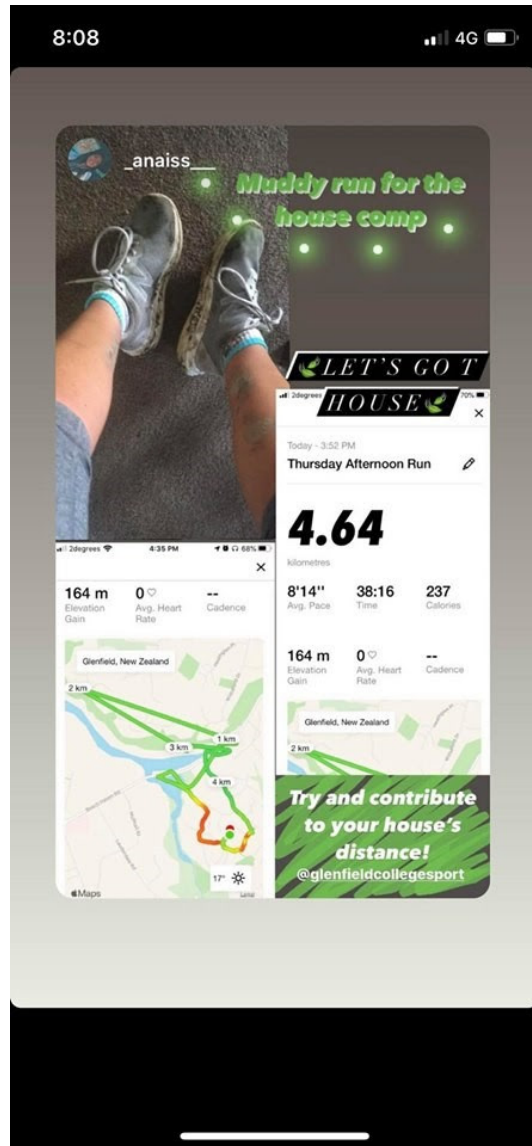
Kaipatiki: 518km

Mayfield: 515km

You can view the student's efforts and their distances by following our Instagram @glenfieldcollegesport.

Ms O'Hara has extended the finish date until Friday 18th September so please make sure you enter your results and upload a picture of your distance here:

https://docs.google.com/forms/u/0/d/e/1FAIpQLSfC01_hv_NZWsaEJVMdhe1bWhBpOnLNqRR-nFLqEiKmqEaSaA/formResponse





To follow @glenfieldcollegesport click below



To see the latest sports fixtures click below



TERM DATES	
TERM 3	MONDAY, 20 JULY TO FRIDAY, 25 SEPTEMBER
TERM 4	MONDAY, 12 OCTOBER TO WEDNESDAY, 9 DECEMBER



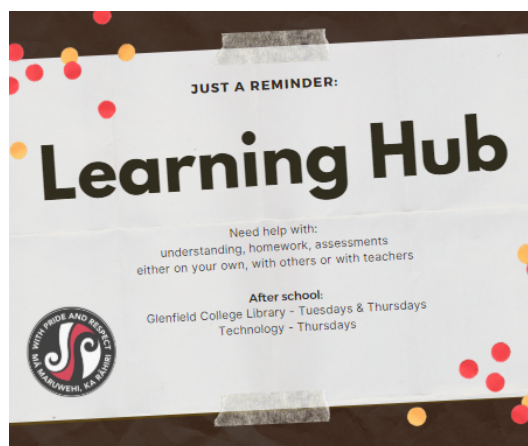
A Message from the Police

Waitemata East Police Youth team are focussing on student drivers in term three 2020. This means at some stage this term, you will notice an increased police presence around your school at finish time (3-4 pm). This may happen just once or on numerous occasions. You may be stopped by police in a patrol vehicle, or you may be stopped at a police road checkpoint. We will be confirming your vehicle status – like a current warrant of fitness and licence labels, the seat-belts of drivers and passengers, distractions such as mobile phone use while driving, and especially your licences – confirming you are driving to the conditions of any licence you hold. Some of the most common tickets we give to young drivers are as follows – be aware some of these infringements also carry demerit points when issued:

- Driver not carrying drivers licence (\$55)
- Using a mobile phone while driving (\$80)
- Driver not wearing a seat-belt (\$150)
- Learner Driver Unaccompanied (\$100)
- Speeding (fines from \$30 to \$630)
- Not displaying L Plates (\$100)

Restricted driver carrying passengers (\$100)

Expired Warrant of Fitness or Expired Licence label (\$200 each)





WEARING IS BELIEVING NZ UNIFORMS

Glenfield College Uniform Available from 'New Zealand Uniforms'

Store: 19A Douglas Alexander Pde, Albany

Phone: 09 477 6300

Email: albany@nzuniforms.com

Store Hours: Weekdays 9am – 5pm, Saturday 9am – 1pm

Web: www.nzuniforms.com

Payment Options:

NZ Uniforms accepts Cash, Eftpos, all major Credit Cards and WINZ payments. We also offer finance through Gilrose Finance, PartPay and have a 'Uniform Club' which is a great way to save for your School Uniform purchases.

'Uniform Club' :

It's easy, set up an account and make automatic payments (weekly, fortnightly or monthly) in advance and watch your balance grow. When you are ready to make your Schoolwear purchases with NZU, your money is already available and waiting to be spent! Call or visit the store today to get started.



AVAILABLE NOW

Lunch Orders

HOW IT WORKS

STEP 1:

GO TO WWW.LUNCHORDERS.CO.NZ

STEP 2:

SIGN UP & PLACE AN ORDER

STEP 3:

YOUR STUDENT'S LUNCH WILL THEN BE MADE FRESH & READY TO BE PICKED UP AT LUNCHTIME!

WWW.LUNCHORDERS.CO.NZ

You are receiving this email because you have a child attending Glenfield College, or you are associated with Glenfield College in some way.

Our mailing address is:

Glenfield College
Kaipatiki Road
Glenfield
Auckland, Auk 0629
New Zealand

[Add us to your address book](#)

Want to change how you receive these emails?

You can [update your preferences](#) or [unsubscribe from this list](#).

