

From: Glenfield College
Sent: Friday, 4 May 2018 3:14 PM
To: staff-all@gc.ac.nz
Subject: Newsletter Term 2 Week 1

[View this email in your browser](#)



Term 2 Week 1, 4th May 2018
Kaipatiki Road, Glenfield, Auckland, 0629 / +64-9-441-9776

LETTER FROM THE PRINCIPAL



I hope all our families have enjoyed a restful break over the past fortnight.

As discussed with the students at assembly on Monday morning, the great aspect of a break is that it gives you a chance to catch up on sleep, friendships, work, as well as the opportunity to reflect on what you have achieved or want to achieve.

The reflections/highlights for us at Glenfield College include the following:

DATES AND EVENTS

**Thursday
10 May**
Otago University Visit
1:30pm

**Saturday
12 May**
Auckland Maths Olympiad
8:30am-2pm
Auckland University

**Tuesday
15 May**
Project K Mentor Matching
3:10pm

- *Receiving wonderful emails and thanks from those who attended our Anzac service on the last Friday of Term 1*
- *Being contacted by Principals from other schools complimenting us on our new sports uniforms*
- *Attending the Anzac Day ceremony at the Glenfield War Memorial on Anzac Day; the pride and respect shown to the significant crowd by the students who attended couldn't have been of a higher standard*
- *Having lunch with the Services Academy students and finding out a little more about them; the absolute highlight was the feedback from the table nearby who couldn't get over what great ambassadors for the school the students were*
- *Preparing and signing off on the Glenfield College App, which will be launched within the next two weeks*

**Wednesday
16 May**
Report Evening TBC
4:00pm

**Thursday
17 May**
Massey University Visit
1:30pm

[Glenfield College Event
Calendar](#)

[Glenfield College Term
Dates](#)

[Sports Fixtures](#)

So what can your children do to ensure 2018 is a very successful year for them?

- *Work hard*
- *Commit themselves to whatever they undertake*
- *Do the right thing*
- *Meet deadlines; deadlines mean exactly that, it is a **Dead. Line.***
- *If they make a mistake, own up to it, learn from it, and make sure it doesn't happen again*
- *Believe in themselves*
- *Represent the school with absolute pride and respect*

Because the key learning for the students is that they need to believe in themselves and their potential, as their is no doubt the staff and leaders believe in them.

Mā Maruwehi, Ka Rāhiri
With Pride and Respect,

Mr Paul McKinley
Principal

[Glenfield College Website](#)

[Glenfield Community](#)

[Contact Us](#)

SCHOOL NEWS

ANZAC DAY Glenfield War Memorial



On Wednesday, 25 April 2018 Glenfield College were privileged to play a significant role in the Anzac Service held at the Glenfield War Memorial. Head Prefects, Filip Ograbek and Nicola Moody-Turnwald, presented readings and Mr McKinley gave an address about "What Anzac Day Means":

*We remember the grief of those who lost loved ones;
We the sacrifices that so many thousands of people made for the country;
We honour the fallen.*

Finally, Deputy Head Prefects, Courtney Kapi and Khushaal Singh, were able to lay the wreath on behalf of Glenfield College.



The pride and respect shown by the Prefects and Services Academy students was a wonderful endorsement of the school's focus.

For more photos of the event, [CLICK HERE](#)

AUT Visit

Approximately 40 students from Year 12 and 13 attended the presentation by Yuval Eyal on Tuesday about what is offered at AUT. She pointed out how AUT was different from other universities and some of the specialities they have in the various faculties, such as Creative Technologies, Communication Studies, and Engineering.



Mentoring Programme

Mentoring at Glenfield College

Glenfield College prides itself on being a community school that embraces best practice. Current best practice is having a Mentoring Programme, as research clearly shows that having a significant adult working with young people has a positive effect with goal setting, motivation and success in later years.

Mentoring is a central aspect in developing aspirational goals with students and assisting them in meeting them at Glenfield College. The one-on-one conversations and connections with Whanau and families are essential to its success.

The aim is that every student will have an adult overseeing, monitoring and supporting his or her academic progress and their approach to College life. In most cases, this will be the Form Class teacher, but also includes the Dean or Senior Leader of that year level. Each mentor/student relationship is based on a common goal: to advance the educational and personal growth of the student



Junior School Programme

At Year 9 / 10, the students will begin to understand goal setting, with short- / long-term ideas and understanding how they can be assisted in reaching these. Year 9 also have Peer Support Leaders in place on a Friday Morning.

For Year 9 and 10 we will be holding parent/teacher evenings so that parents are able to meet with the Core Subject teachers to discuss progress. In attendance as well will be the Form Class teachers / Deans and Senior Leaders.

Senior School Programme

Each Year 11, 12 and 13 student will work with a mentor (staff member) and be guided and advised to ensure that they progress towards and achieve their NCEA qualification and their learning/attendance/co-curricular goals.

The mentor will only have mentees at one year level, in most cases, so that the mentor / mentee can focus on specific areas at that time – it also allows the mentor / mentees to work both individually and as groups. Through the year there will be mentor/student/parent meetings to go over setting goals, progress towards meeting those goals and pathways moving forward.

A Warm Welcome to Our Newest Teacher



Michelle Halpin joins the staff of Glenfield College as teacher of a range of subjects, including Social Studies, Science, and Mathematics. Michelle comes to us with a diverse background in education, having held various teaching and management positions, both here in New Zealand and in Australia. We welcome her, to not only our College, but to our community.

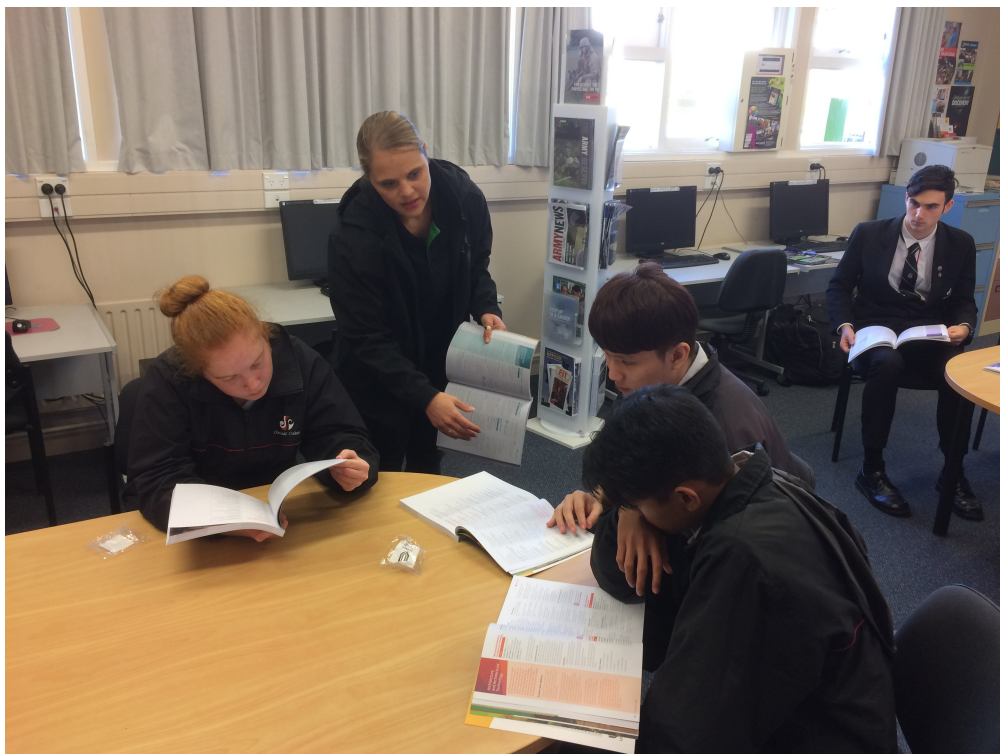
Services Academy Basic Leadership Camp



Aimee Brentnall, Tafseer Carabuena, Kai Stroebel, Chase Murray, and Paul Gringel were selected to attend a five-day leadership camp held at Moirs Point Christian Camp in Mangawhai. They were selected for this military-facilitated leadership camp for their outstanding leadership demonstrated during the Services Academy Induction Camp. Aimee, Sean, Kai, Chase, and Paul will learn and use the practical application of leadership while participating in a series of team building scenarios. Students participating will be expected to plan, lead, and complete team building scenarios to a high standard and within a set time-frame. New Zealand Defence Force staff will guide and give feedback/feed-forward so that students can improve their leadership capabilities.

UNITEC Visit

A number of students attended the Unitec presentation to find out what specialist courses they have on offer. They have a range of qualifications ranging from foundation courses through to Bachelors degrees in a wide range of subjects. Former Glenfield College students have enrolled at Unitec for Carpentry, Architecture, Automotive, Animal Care, and the highly rated Performing Arts degree. The photo shows Unitec liaison officer Debbie Loots working through the Unitec prospectus with Tamilla Todd (Animal Care), Jack Jang (Computing), and JJ Yaneza (Architecture) in the foreground and Guy Roberts (Environmental Sustainability) in the background.



Fortnightly Reports

These are designed to give feedback to students and parents on the level of effort that has been shown both in class and at home each fortnight (5 Reports per term to be emailed home).

The grades given range from 1-5, where 1 is Concern and 5 is Excellent.

Where a student has been awarded a grade of 1 or 2 the teacher should have given the student a brief verbal explanation of why they got that grade (e.g. you didn't complete either piece of homework well enough). Teachers are encouraged to also give students brief verbal feedback if they are close to improving their grade, but haven't quite managed it.

Report Dates for Term 2

<u>Week</u>	<u>Report Emailed and Uploaded to KAMAR Portal</u>
2	Friday 11 May
4	Friday 25 May
6	Friday 8 June
8	Friday 22 June
10	Friday 6 July

A copy of the Report Grade Range is also emailed out each fortnight with the report.



Fortnightly Report

Students Name

Year TG

Average for All Subjects										
T1	T2	T3	T4	Wk 2	Wk 4	Wk 6	Wk 8	Wk 10	Year	
3.3					3.4	3.3	3.3	3.4	3.3	
L1 Business Studies										
Mr C Hett (c.hett@gc.ac.nz)				Wk 2	Wk 4	Wk 6	Wk 8	Wk 10	Year	
				n/a	3	3	3	3	3.0	
L1 English										
Ms D Allaker (d.allaker@gc.ac.nz)				Wk 2	Wk 4	Wk 6	Wk 8	Wk 10	Year	
				n/a	3.5	4	4	4	3.8	
L1 Information Technology										
Mr M Lewis (m.lewis@gc.ac.nz)				Wk 2	Wk 4	Wk 6	Wk 8	Wk 10	Year	
				n/a	2.5	3	3	3	2.8	
L1 Mathematics										
Mrs S Higgins (s.higgins@gc.ac.nz)				Wk 2	Wk 4	Wk 6	Wk 8	Wk 10	Year	
				n/a	4	4	4	4	4.0	
L1 Physical Education										
Ms R Colquhoun (r.colquhoun@gc.ac.nz)				Wk 2	Wk 4	Wk 6	Wk 8	Wk 10	Year	
				n/a	4	3.5	3	4	3.7	
L1 Science										
Mrs S Hanooch (s.hanooch@gc.ac.nz)				Wk 2	Wk 4	Wk 6	Wk 8	Wk 10	Year	
				n/a	3.5	2.5	3	2.5	2.9	

1: Concern 2: Needs Improvement 3: Satisfactory 4: Good 5: Excellent n/a: no data collected

Direct Contact

Staff can also be contacted directly by email, to explain when the performance level is a Concern or Needs Improvement.

Parental Portal

Parents are encouraged to view Assessment results, Attendance and Pastoral Concerns on the Parent Portal. Please contact the school office (admin@gc.ac.nz) if you are unsure of your log in details.

Not Received

If you are not receiving these reports please email admin@gc.ac.nz to confirm your email address.

SPORTS



Sports Report

Football

1st XI Boys

The 1st XI Boys have been training throughout the school holidays and have been preparing with scrimmages against Northcote 2nd XI (5-5 draw, 1-2 loss), Northcote 3rd XI (4-1 win) and Birkenhead 1st XI (1-4 loss). Despite the results, the team has been playing an attractive brand of football; the team is looking ahead to their opening fixture against St Peters on the 12th May

Development XI

The Development XI kick off their season on the 12th May versus Takapuna. Good luck to all teams involved.



Netball

Team 1

Team 1 started their season with matches against Birkenhead College, Westlake, Kingway, and Waiheke in their grading round of the competition. Excellent individual performances and team continuity helped record wins over Birkenhead College and Westlake. Heading into the night session, the team performed with great heart but fell short with a narrow overtime loss to Kingsway and again falling to Waiheke later that evening. The team boasts the experience of five Year 13 girls and a mix of Junior and Seniors. We look forward to seeing what this team can achieve over the Winter Season.



'Go GriFFs'

Jamie Mason

Sports Coordinator

Outstanding Sports Performance

Caroline Ueanteiti is a Year 11 student who is passionate about Volleyball. She competed last term in the North Harbour Competition at the Barfoot & Thompson Centre and was selected to be involved with the new Prospectus at Glenfield College. She has been involved in the Coaching Student Initiative (with 10 other students), where students are taught coaching methods, strategies, and practical assessments in order to coach a team at Glenfield College. The College looks forward to seeing how Caroline progresses throughout the year, academically and through sport.



Get behind Glenfield Sport this year:
‘like’ and ‘share’ our [Facebook page](#)
Use the hashtag #GoGryphs or #GC



Coaches and Managers

With many teams representing Glenfield College each year it is vital that we have parent and community involvement in coaching and managing teams. All assistance is encouraged and supported. If you believe you possess a skillset which would be of value to Glenfield College Sport, please don't hesitate in contacting us or making yourself known. It is vitally important that parents and caregivers support their sons and daughters involvement in all aspects of sport. If at any stage you have queries or concerns please take the time to contact our Sports Coordinator, Teacher in Charge, or the principal so the correct pathways can be followed.

The following sports are in need of coaches

- Badminton
- Table Tennis
- Basketball
- Netball
- Football

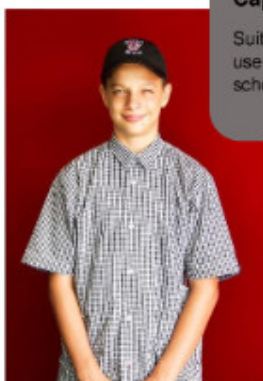
Sports Department

j.mason@gc.ac.nz

09 444 9066 ext 625

GENERAL NOTICES

Supporters' Gear



Cap \$15

Suitable for outdoor use to and from school



Hoodie \$55

Supporters' Gear only; suitable to be worn in the Glenfield Community

Personalization optional



Scarf \$45

Can be used as a part of the Glenfield College Uniform

To purchase Supporters' Gear, contact **Ms Julie Kilroy** in the **Finance Office** located in the **Student Centre**. Merchandise available for pick-up one week after purchase.

Safety at Glenfield College

As we progress through the term, the following general reminders are given to all:

- **Safety:** Students must remember to make safe choices about the routes they walk when coming to and leaving from school. Students are advised to walk in small groups and not to take shortcuts when walking alone.

- **Behaviour:** Walking in groups is encouraged but everyone must please be aware of other pedestrians and traffic. While it is easy to get distracted when talking to friends, students must make sure to watch where they are going and that they give way to others. Pride and Respect means having an awareness of those around you, and acting in the best interest of everyone.
- **Driving:** Parents are reminded that Kaipatiki can become quite busy at both ends of the school day. As a school, we are very concerned at the behaviour of speeding traffic down Kaipatiki Road. All drivers should maintain a safe speed when travelling to and from school.
- **Parking:** Parents who park on yellow lines are putting our students at risk. In the interest of student safety the yellow lines outside the College grounds.
- **Please do NOT perform U turns** on Kaipatiki Road or outside the school Gates.



We Want to Share Your News!

At Glenfield College we are extremely proud of student achievement. We are keen to acknowledge student success by sharing their achievements with the wider community and through our newsletter, local media, social media channels, and college website.

With recognition that a good number of achievements happen outside school hours, we need your support. You can assist us greatly by keeping in touch and letting us know your news.

Please email your success story and photo (if you have one available) to us at reception@gc.ac.nz.

Examples of news can vary and can include making a national or local rep team, selection for an overseas exchange, winning a community award or being selected to represent your community in an area of interest. Nothing is considered too small so please don't feel shy about sending it in! We look forward to hearing from you!



Copyright © 2018 Glenfield College, All rights reserved.

You are receiving this email because you are a member of the Glenfield College Community

Our mailing address is:

Glenfield College
Kaipatiki Road
Glenfield
Auckland, Auk 0629
New Zealand

[Add us to your address book](#)

Want to change how you receive these emails?
You can [update your preferences](#) or [unsubscribe from this list](#).

MailChimp